



1. SMOTHER
2. SCRAPER
4. SMALL SCRAPER
5. 4. PINE TAPPING KNIFE
5. PINE TAPPING KNIFE FOR POLE
6. MALETT
7. PINE TAPPING KNIFE FOR POLE
8. **TRACER**
9. POLE

# 8

## TRACER

### Description

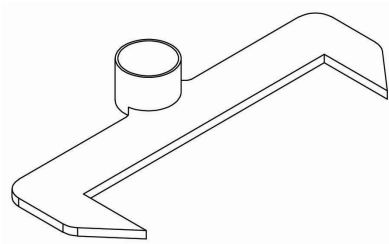
Tool used in the preparation phase of the pine that serves to delimit the width of the face of the trunk that is going to be resined, once the desroñeña has been carried out.

### Utilisation

The tool is used by resting the tines or edges of the tool on the wood and moving it with the help of a wooden handle in a vertical direction along the trunk, where two vertical lines will be marked out to define the limits of the face.

### Observations

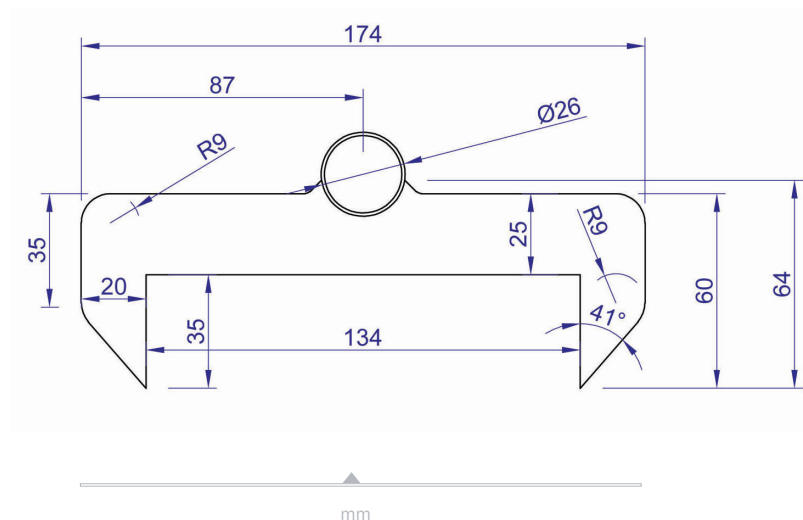
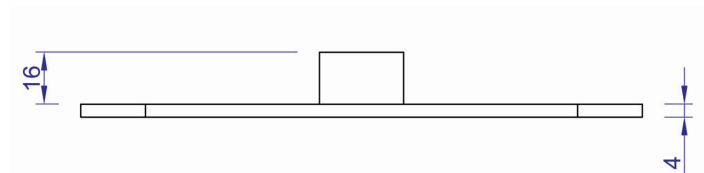
The width of the notch is determined by the specifications of the exploitation, so it can vary from one region to another.



### T

## Materials

It consists of a flat piece made of iron with two sharp edges or spikes located at both ends, which are slightly more than 12 cm apart, this being the width to practice the carving. In the central part of the piece, an iron tube is welded to serve as a clamp, where the handle of the tool is inserted.



# 8 TRACER

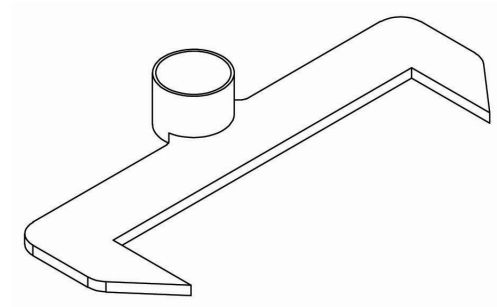
## Manufacturing Instructions

### 1. Cutting

The starting point is a 4-5 mm thick iron plate, which has been cut by a grinding machine according to the detail drawings, and to which the 2 edges or barbs have been made with the same machine, as well as an iron tube, 26 mm in diameter, which is used as a clamp to insert the handle.

### 2. Welding

Once the iron piece is ready, it is welded to the tube, which will serve as a clamp for the placement of the wooden handle.



### 3. Sharpening

This last treatment is carried out on the edge of the tool blade using a fine disc grinder or a sandstone.

**MAINTENANCE:** The only maintenance of this tool is sharpening.