



# incredible

Innovation Networks for Cork, Resins & Edibles

## “Resin resource monitoring & modelling in a context of climate change”

Madrid, January 21/22, 2019



Organized by:

INIA, Madrid (Spain)

iNet

Interregional Workshop

Coordinator



Partners



**Forestas**

Agencia forestal regional para a Galicia de az  
territorio e de l'ambiente de sa Sardegna  
Agencia forestal regional per la sviluppo del  
territorio e dell'ambiente della Sardegna



This project has received funding from the European Union's Horizon 2020 research and innovation programme under grant agreement No 774632

[www.incredibleforest.net](http://www.incredibleforest.net)

## “Resin resource monitoring & modelling in a context of climate change”

**Introduction:** This two-day event combines a seminar about the state of art and the sector’s requests. Multi-actor sessions will be animated by innovation facilitators, to cover the first of the identified **iNet Priorities** related to sustainable production of natural resin from Mediterranean forests, **Resource modelling in a context of climate change**. It has been retitled **Long term resource availability in a context of global change**, switching focus from science tools to more practical issues. The quality and relevance of delivered knowledge will be collectively assessed, priorities and future activities will be identified.

**Addressed to:** Forestry modelers, Resin sector enterprises and stakeholders, Decision makers

**Venue:** INIA, National Institute for Agricultural and Food Research and Technology  
Crta. La Coruña km 7,5, 28040 Madrid (Spain)

**Language:** English

### Objectives to be reached:

#### A. Participants:

- 1- are familiar with INCREdible network and objectives;
- 2- have a grip on resin resource availability and potential in the different countries;
- 3- are aware of the main threats & challenges for resin tapping in pine forests;
- 4- know about the state of art, potential and requirements of forest modelling for resin production;
- 5- agree on the needs and challenges of the resin sector that forest inventories models can respond.

#### B. Resin iNet questions directly targeted:

- 10 - What is the potential for resin production in each region?
- 12 - In a context of global change, will the geographical area and productivity of the maritime pine change?

## PROGRAMME

Monday, January 21, 2019	
11:00	<b>Register of participants</b>
12:00	<b>Opening session</b> <i>Welcome by the Director of INIA</i> Esther Esteban Rodrigo <b>INCREdible, the thematic network on Mediterranean NWFP</b> Sven Mutke, INIA-iuFOR <b>Objectives and structure of the workshop</b> Javier Calvo, CESEFOR / Ricardo Alía, INIA-iuFOR

<b>Session 1. Resin production from pine forests: resources, inventory and monitoring – where are we?</b>	
<b>12:30</b>	<i>Portuguese resin traceability &amp; statistics (SiResin)</i> Paula Soares, ISA-U.Lisboa
<b>12:45</b>	<i>Resin in Spanish National Forest Inventory &amp; statistics</i> Elena Robla / Iciar Alberdi, MAPAMA/INIA
<b>13:00</b>	<i>Potential of French maritime pine forests for resin production</i> Christophe Orazio, EFI
<b>13:30</b>	<b>Lunch</b>
<b>14:30</b>	<i>Resin tapping in Castilla y León –keys of a success story</i> Javier Ezquerra / Álvaro Picardo, Junta de Castilla y León
<b>14:45</b>	<i>Development of a web/Android app for resin traceability</i> Javier Calvo, CESEFOR/SustForest Plus
<b>15:00</b>	<i>Pine forests in Tunisia – an opportunity for local employment in resin production?</i> Ibtissem Taghouti / Mokhtar Baraket, INRGREF
<b>15:15</b>	<i>Panel Discussion</i>
<b>16:00</b>	<b>Coffee break</b>
<b>16:30-18:00</b>	<i>Group work</i>
<b>Tuesday, January 22, 2019</b>	
<b>Session 2. Threats &amp; challenges for resin tapping in pine forests – what are we facing?</b>	
<b>09:00</b>	<i>Climate change and forest resilience – maritime pine decline at southern Guadarrama</i> Guillermo Gea / Dario Martín Benito, INIA
<b>09:15</b>	<i>Maritime pine decline in Northern Castile, droughts and implied pathogens</i> Julio Diez Casero, iuFOR-U. Valladolid
<b>09:30</b>	<i>Rural abandonment and evolution towards megafires – a rural renaissance needed?</i> Conceição Colaço, ISA-ULisboa
<b>09:45</b>	<i>Panel Discussion</i>
<b>Session 3. Resin yield data &amp; models, a support for resource mobilisation – what can science tell us?</b>	
<b>10:00</b>	<i>Which resin yield data and models do the resin sector need?</i> Mariana Ferreira, LURESA Resinas
<b>10:15</b>	<i>What information is needed for market and profitability analysis of resin tapping systems?</i> Christophe Orazio / Armand Clopeau, EFI / SustForest Plus project
<b>10:30</b>	<i>SustForest Lab &amp; sampling protocols for Maritime pine resin as forest resource</i> Ricardo Alía, INIA-iuFOR
<b>10:45</b>	<i>Growth and yield models for Maritime pine and its resin yield</i> Felipe Bravo, UVa-iuFOR

11:00	Coffee break
Tuesday, 22	
11:30	<i>Climate and soil factors influencing individual tree resin yield</i> Aida Rodriguez, UPM
11:45	<i>Process based models for resource monitoring in Pinus pinaster</i> Marta Gonzalez García, CETEMAS
12:00	<i>Remote sensing approaches to forest resource inventories for resin yield modelling</i> Rafael Alonso, föra
12:15	Panel Discussion
12:30	Group work
13:30	Lunch
Final Session. Needs and challenges for the sector that forest models can respond.	
14:30	Group work
16:00	Plenary Session
16:30	Closure
17:00-18:30	[SustForestPlus – internal project coordination meeting]

### Practical information

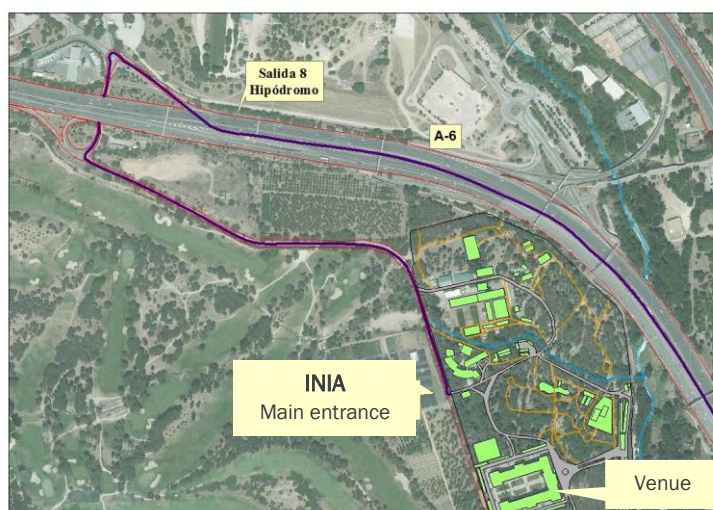
#### Travel information

Madrid as capital is located in the centre of Spain and can be reached easily by train, bus or plane ([Airport Madrid-Barajas Adolfo Suárez, MAD](#)).

The workshop venue is the National Institute for Agricultural and Food Research and Technology ([www.inia.es](http://www.inia.es))

**INIA, Instituto Nacional de Investigación y Tecnología Agraria y Alimentaria**

Carretera de La Coruña km 7,5, 28040 Madrid ([N 40° 27' 18"; W 03° 44' 55"](#), A6 highway exit **km 8 “Hipódromo”**)



### Contact and registration

Please contact INIA-CIFOR secretariat [seccifor@inia.es](mailto:seccifor@inia.es), reference “Resin workshop”